



AROUND THE SHOWER

PRODUCT OVERVIEW

A small insight into our
extensive assortment
of shower fittings
and accessories.

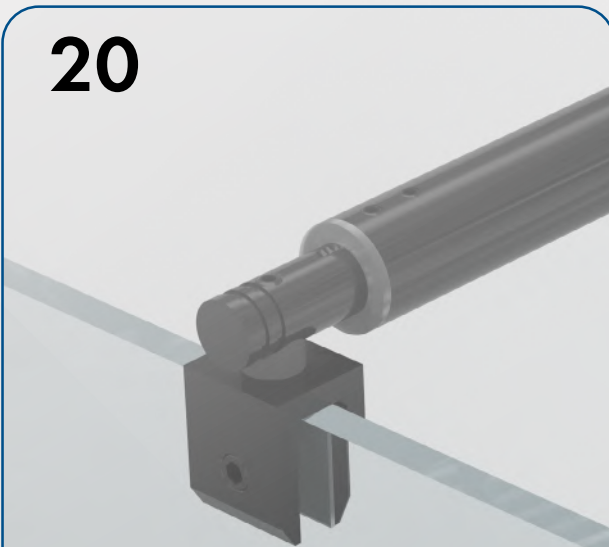
Slidmetall®

04 - 15

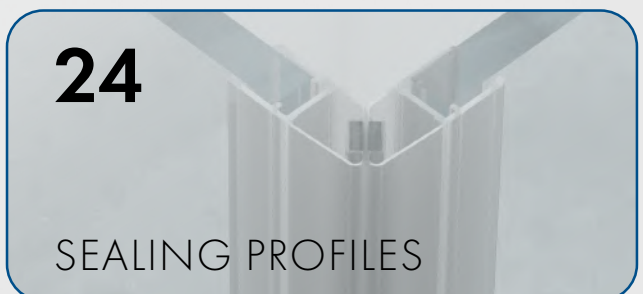
SHOWER FITTINGS

18

SLIDING DOOR SHOWER COLETTE

20

STABILIZER BARS

22SHOWER DOOR KNOBS &
SHOWER DOOR KNOBS**24**

SEALING PROFILES

AROUND THE SHOWER

PRODUCT OVERVIEW



SHOWER FITTINGS FOR EVERY SHOWER TYPE

The Südmetall range currently includes 4 different series of brass shower fittings, as well as the Colette sliding door shower in stainless steel: all have different visual as well as technical characteristics.

Besides to design, individuality and functionality, we place particular emphasis on the highest quality standards. Our products are made of high-quality materials and are therefore durable and robust. The wide range of products includes glass door hinges, seals, swing protection and stabilizer bars. In addition, we offer your customers a variety of colors and designs to choose from, so you can cater to individual customer needs and design the bathroom just the way they want it.

Our shower fittings are the perfect choice for any bathroom, bringing elegance, functionality, modern design and individuality to any home!

You can make your customers happy by designing a feel-good bathroom!

- Screw-on plate with slotted holes and screw cover
- Zero position adjustable
- Simplified zero position adjustment
- Max. Door weight 40 kg
- Concealed screw connections
- Wall mounting bracket with slotted holes for easy mounting and adjustment
- Color options: Bright chrome-plated brass and satin nickel-plated brass
- For glass thickness 8/10 mm



**SHOWER SWING DOOR HINGE**

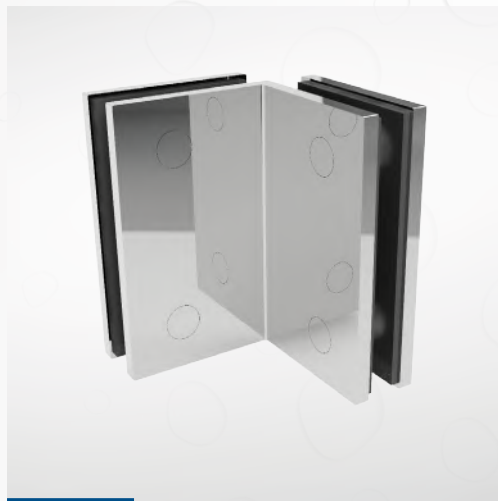
Wall / glass 90°, bright chrome plated

**SHOWER SWING DOOR HINGE**

Glass / glass 180°, bright chrome plated

**SHOWER SWING DOOR HINGE**

Glass / glass 90°, bright chrome plated

**SHOWER ANGLE CONNECTOR**

Glass / glass 90°, bright chrome plated

**SHOWER ANGLE CONNECTOR**

Wall / glass 90°, bright chrome plated

- Larger screw-on plate with slotted holes and screw cover
- **Available in outward and inward opening versions**
- With lifting and lowering mechanism
- Max. Door weight 40 kg
- Zero position adjustable
- Height adjustable
- Wall mounting bracket with slotted holes for easy mounting and adjustment
- For glass thickness 8 mm



**SHOWER DOOR HINGE**

Wall / glass 90°, bright chrome plated

**SHOWER DOOR HINGE**

Glass / glass 180°, bright chrome plated

**ANGLE CONNECTOR**

Glass / glass 90°, bright chrome plated

**ANGLE CONNECTOR**

Wall / glass 90°, bright chrome plated

- Larger screw-on plate with slotted holes and screw cover
- **Only opening to the outside!**
- With lifting and lowering mechanism
- Max. Door weight 40 kg
- Zero position adjustable
- Height adjustable
- Wall mounting bracket with slotted holes for easy mounting and adjustment
- Black matt
- For glass thickness 8 mm

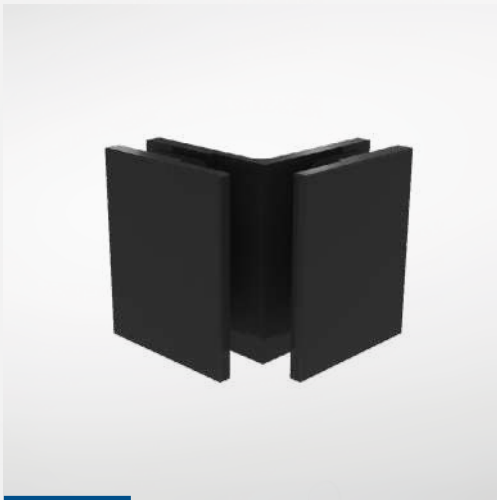


**SHOWER DOOR HINGE**

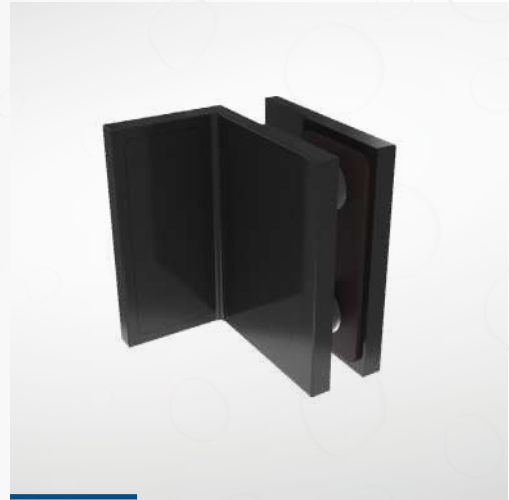
Wall / glass 90°, black matt

**SHOWER DOOR HINGE**

Glass / glass 180°, black matt

**ANGLE CONNECTOR**

Glass / glass 90°, black matt

**ANGLE CONNECTOR**

Wall / glass 90°, black matt

- Concealed flush screw connection
- Intermediate layer made of hard cell
- With lifting and lowering mechanism
- Max. Door weight 35 kg
- Zero position adjustable
- Wall mounting bracket with slotted holes for easy mounting and adjustment
- For glass thickness 8 mm



**SHOWER DOOR HINGE**

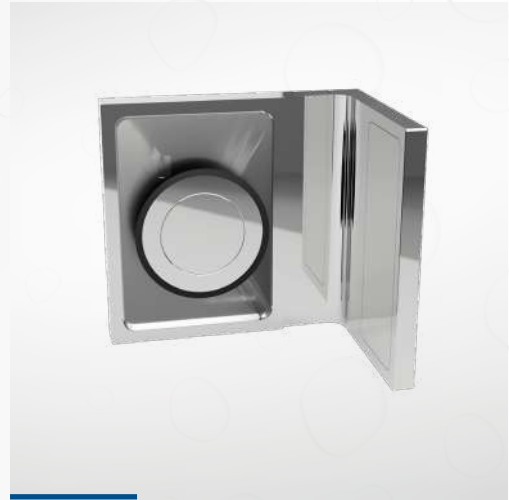
Wall / glass 90°, bright chrome plated

**SHOWER DOOR HINGE**

Glass / glass 180°, bright chrome plated

**ANGLE CONNECTOR**

Glass / glass 90°, bright chrome plated

**ANGLE CONNECTOR**

Wall / glass 90°, bright chrome plated

- Screw-on plate with slotted holes and screw cover
- Max. Door weight 40 kg
- Zero position adjustable
- Brass bright chrome plated
- For glass thickness 8/10 mm



**SHOWER SWING DOOR HINGE**

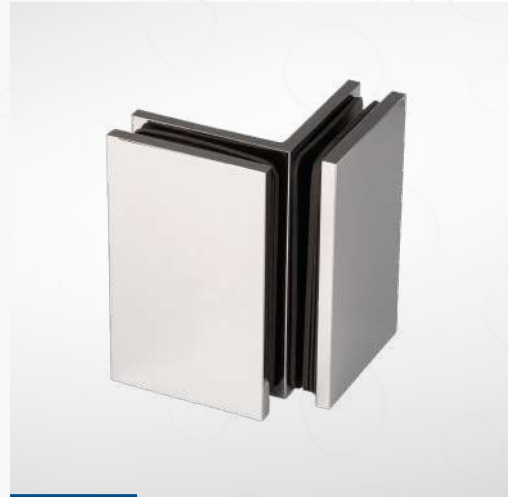
Wall / glass 90°, bright chrome plated

**SHOWER SWING DOOR HINGE**

Glass / glass 180°, bright chrome plated

**SHOWER SWING DOOR HINGE**

Glass / glass 90°, bright chrome plated

**ANGLE CONNECTOR**

Glass / glass 90°, bright chrome plated

**ANGLE CONNECTOR**

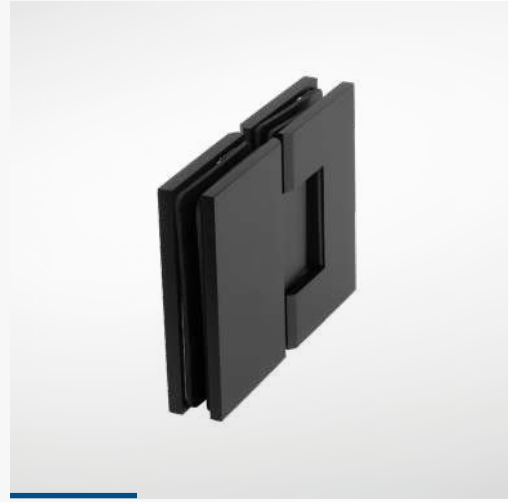
Wall / glass 90°, bright chrome plated

- Screw-on plate with slotted holes and screw cover
- Max. Door weight 40 kg
- Zero position adjustable
- Brass black matt
- For glass thickness 8/10 mm



**SHOWER SWING DOOR HINGE**

Wall / glass 90°, black matt

**SHOWER SWING DOOR HINGE**

Glass / glass 180°, black matt

**SHOWER SWING DOOR HINGE**

Glass / glass 90°, black matt

**ANGLE CONNECTOR**

Glass / glass 90°, black matt

**ANGLE CONNECTOR**

Wall / glass 90°, black matt





ADVANTAGES OF THE SLIDING SHOWER

- Can be installed without barriers
- Time-saving and fast installation
- Only one person required for installation
- Stopper freely adjustable
- Corner shower can be installed up to 1000 x 1000 mm
- Alcove shower can be installed up to 2100 mm
- For easy cleaning of the shower, the floor guide can be unhooked
- Special dimensions possible at short notice





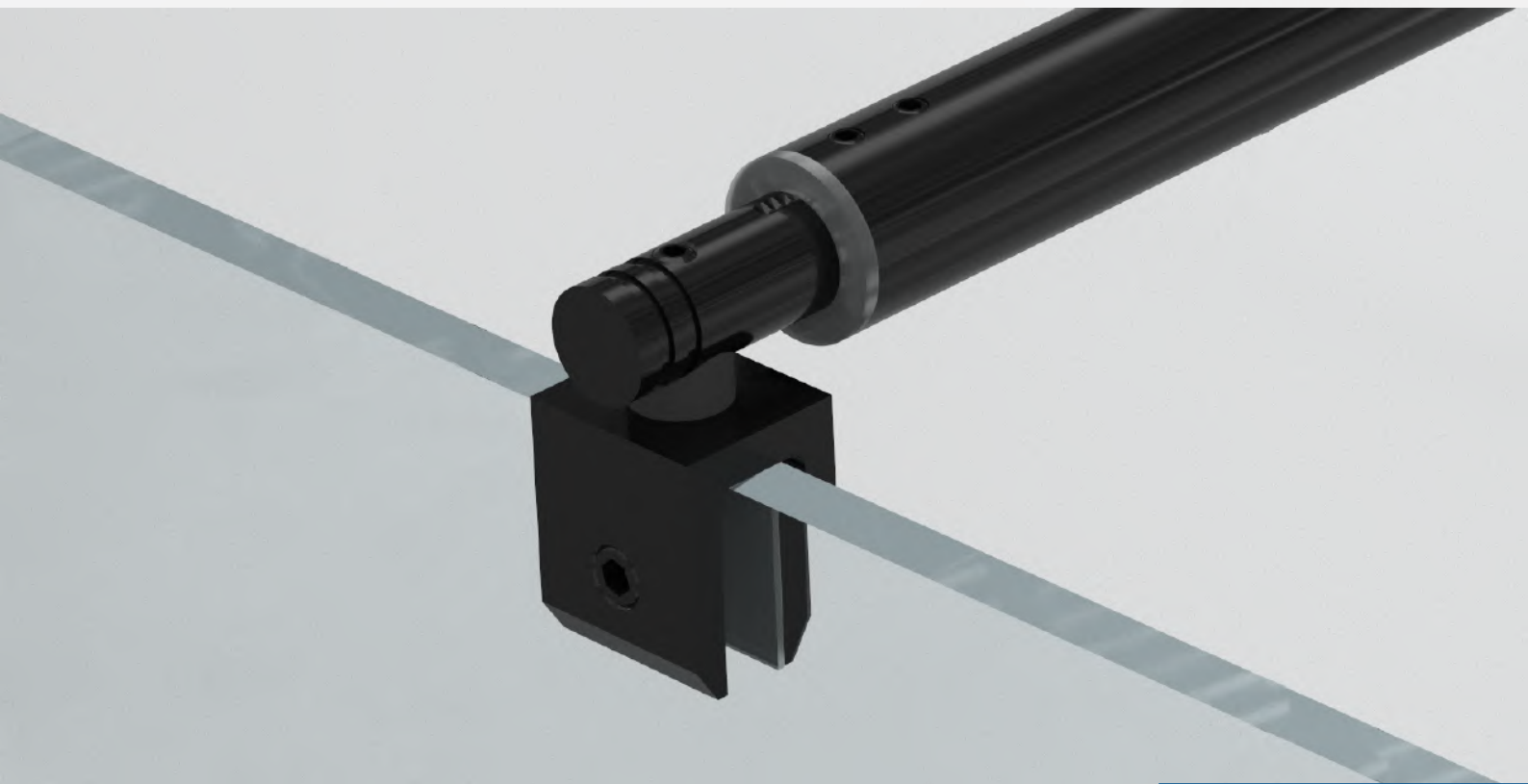
ALCOVE SHOWER
900 x 900 mm



CORNER SHOWER
900 x 900 mm with wall connection U-profile

Glass shower enclosures are not only **contemporary** but also **functional**. The larger the shower, the higher the **wellness factor when showering**. Walk-in solutions or U-shaped showers are popular examples of application. Stabilizer bars and fasteners take on an important function in giving the glass shower the necessary support. **Free-standing showers** often have to withstand heavy loads and therefore require **secure** and **durable stabilization**.

We carry a wide range of stabilizer bars for glass showers made of high-quality materials in various designs, shapes and finishes for a perfect symbiosis of stability and elegance. They harmonize perfectly with any modern bathroom design.



**STABILIZER BAR**

Wall / glass 90°, bright chrome plated

**STABILIZER BAR**

Wall / glass 45°, bright chrome plated

**STABILIZER BAR**

Wall / glass 45°, bright chrome plated

**STABILIZER BAR**

Wall / glass 45°, black matt

**STABILIZER BAR**

Wall / glass 90°, black matt

**STABILIZER BAR**

Wall / glass 90°, bright chrome plated



SHOWER DOOR KNOB
Bright chrome-plated



SHOWER DOOR KNOB
Bright chrome-plated



SHOWER DOOR KNOB
Bright chrome-plated



SHOWER DOOR KNOB
Bright chrome-plated



SHOWER DOOR KNOB
Black matt



SHOWER DOOR KNOB
Black matt



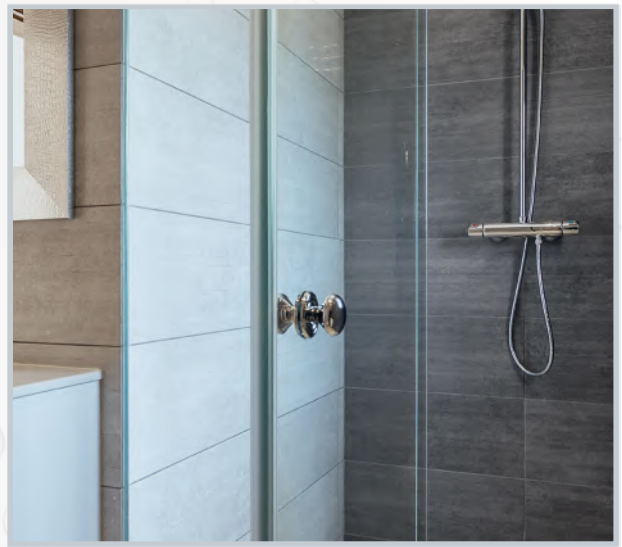
SHOWER DOOR HANDLE

Stainless steel mirror polished



SHOWER DOOR HANDLE

Stainless steel mirror polished



In glass shower enclosures, **shower seals** are installed between the glass elements, in the hinge area and in the floor area to guarantee the **best possible seal** and **prevent water leakage**. Our sealing profiles are available in both transparent and trendy black and can be used for glass thicknesses of 6, 8 and 10 mm. The additional installation of anti-splash profiles will minimise the water leakage even further.



**MAGNETIC PROFILE**

PVC transparent

**STRIP SEAL**

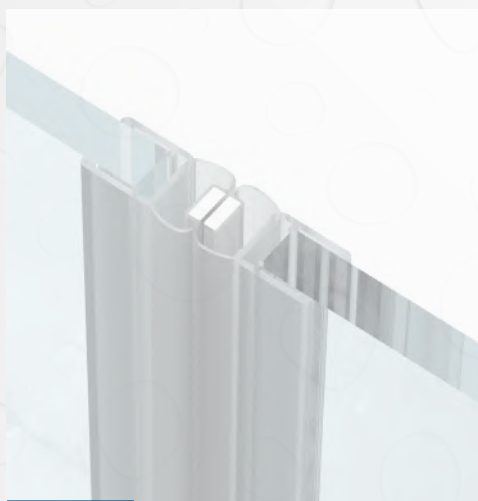
PVC transparent, PVC black

**MEDIUM DENSITY PROFILE**

PVC transparent, PVC black

**STRIP SEAL**

PVC transparent, PVC black

**MAGNETIC PROFILE**

PVC transparent

**SEAL PROFILE**

PVC transparent

Südmetall stands for **modern technology** and **passion** in a **traditionally shaped market**. Since **25 years**, founded in 1995 by Jakob Persterer, the **independent family owned company** has been a **reliable partner** of trade and commerce.

Today, Süd-Metall Beschläge GmbH has over 280 employees and is represented **worldwide** as the main headquarters of the Almar Südmetail Group. With its **metal and glass construction** and **fittings sector**, the company is one of the **market leaders in German-speaking countries**. In 2013, the product range was expanded to include the locking systems division. As a result, customers can now be offered even more wide-ranging solutions from a single source.



WE CAN DO THAT TOO...

Floor profiles, French balcony, handrails and canopies - You can find many construction methods around glass in our catalog "Trend Assortments".





Customer stamp / customer data

Südmetall[®]



Art.-Nr. 36.06.0127