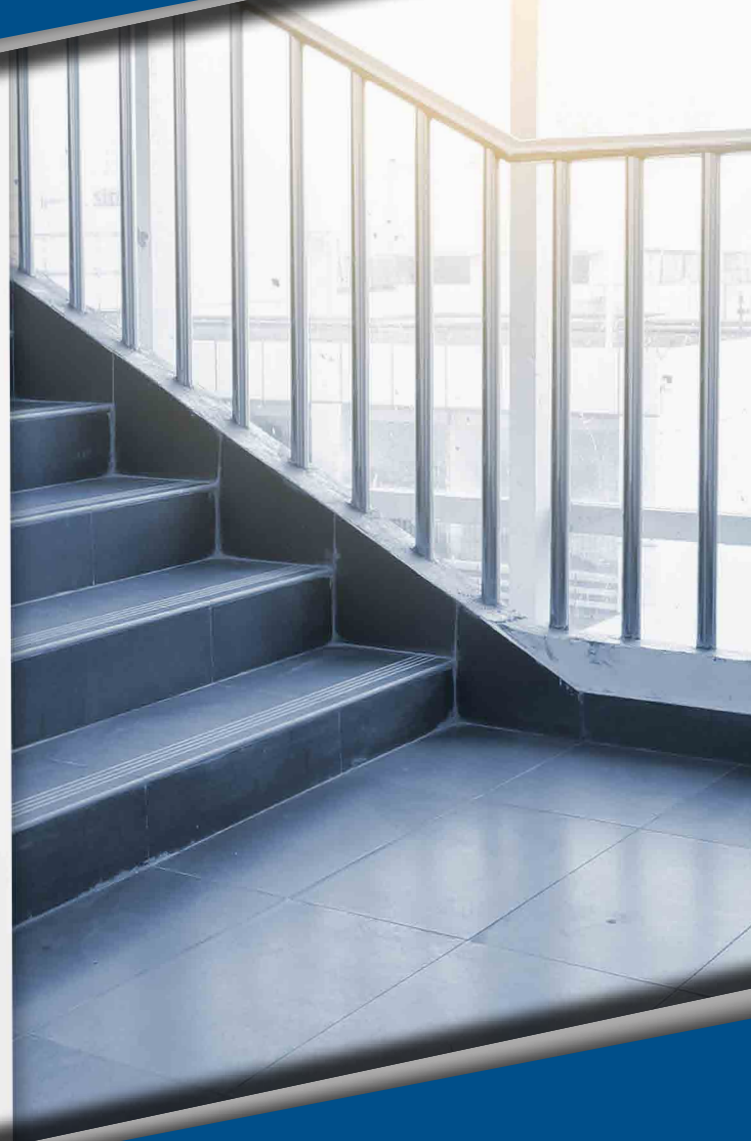


Sudmetall®



U-TOPIC

U-TOPIC



... is probably the
smallest smartlock
in the world!

Südmetall®



The smart home solution for your front door

ÜTopic is a **retrofit motor for mechanical locking cylinders**, which can be controlled via a free **APP**. It enables the **motorized opening and closing of the door**. It is controlled either by fingerprint reader, hand-held radio transmitter or with the user's own smart-phone (Bluetooth).

Safety and comfort made easy

ÜTopic provides **more security and comfort** in the living area with its **simple operation, sleek design and environmentally friendly rechargeable battery**. The sleek stainless steel design fits perfectly into any apartment door.



M O T O R I Z E D O P E N I N G A N D C L O S I N G
S A F E & C O M F O R T A B L E



HAND-HELD RADIO TRANSMITTER



DESIGN HAND-HELD RADIO TRANSMITTER



SMART HOME AUTOMATION INTERFACE



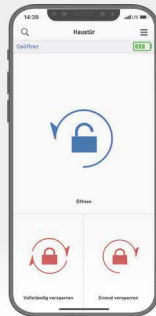
FINGERPRINT READER WITH KEYBOARD



WIRELESS KEYBOARD



AUTO LOCKING MODULE



ÜTOPIC APP



CONTROL OPTIONS



MANAGEMENT VIA THE FREE SMARTPHONE APP

- Allocation of authorizations for additional users
- Automatic actions programmable according to time of day and weekly schedule
- Time-limited authorizations (e.g. for cleaning staff)
- Integration into existing systems possible via interface
- Sending of electronic keys possible



ACCESS CONTROL VIA YOUR SMARTPHONE

ADVANTAGES AT A GLANCE

- **More attractive** and **secure** than traditional smart home locks
- Very **easy installation**, no wiring
- **User-friendly app** (IOS and Android available)
- **App** completely in **German** (other languages can also be selected)
- The ÜTopic is connected via an encrypted Bluetooth connection
- Rechargeable via a Micro USB connection (charging time 3-6 hours)
- The **ÜTopic is mounted on the inside of the front door**, so it is not visible from the outside
- Usage logs available on the app
- **Emergency opening** with existing cylinder key still **possible**
- **No online connection** (cloud) **necessary**



ALL **ADVANTAGES** AT A GLANCE



- **The two arrow keys can be deactivated** (child safety function), thus ensuring that the door cannot be opened manually
- **Utopic can be used with all hardware** (knob, lever handle, push handle)
- Possibility to **limit user time** (e.g. cleaning staff)
- **Up to 40 different users/remote controls can be stored using a smartphone.** With the fingerprint, up to 100 different fingers can be memorized
- The **existing door handle can still be used.** Only one key needs to be modified
- When leaving the apartment/house, the **door can lock automatically** (e.g. after 15 or 30 sec.)



MOUNTING VIDEO



360° VIDEO





ALSO AVAILABLE IN THE **TREND COLOR BLACK MATT**



ÜTOPIC BLACK MATT

- Rechargeable cylinder motor (Micro USB cable included)
- Working frequency BLE and 434 MHz
- LED display
- Mechanical emergency opening possible
- No wiring of the door leaf
- User friendly and license free app
- Encrypted wireless connection
- No online connection (cloud) necessary
- Parental control function



SIMPLY **TIMELESSLY BEAUTIFUL**



WIRELESS KEYBOARD

- Storage of up to 6 passwords
- Power supply: 2 x alkaline batteries (AA)
- Dimensions: 70 mm x 100 mm x 20 mm
- Highly secure wireless communication
- LED graphic display and touch buttons
- Battery life at least 1 year

FINGERPRINTREADER WITH INTEGRATED KEYBOARD

- Storage of up to 100 fingerprints and up to 6 passwords
- Power supply: 2 x alkaline batteries (AA)
- Dimensions: 70 mm x 100 mm x 20 mm
- Highly secure wireless communication
- LED graphic display and touch buttons
- Battery life at least 1 year



CONTROL OPTIONS



AUTO LOCKING MODULE

- Self-locking module that automatically locks the door 5 seconds after closing
- Ensures a much higher level of security
- Consists of magnet and self-locking module:
 - The magnet is mounted on the door leaf
 - The Auto Locking Module is mounted on the door frame.
- Once the door is closed, the Auto Locking Module sends a radio signal to the ÜTtopic after 5 seconds with the command to lock the door
- Dimensions:
 - 24 mm x 64 mm x 22 mm (Auto Locking Module).
 - 14 mm x 45 mm x 14 mm (magnet)
- Available in white and black matt



...FOR EVEN MORE SAFETY

Südmetail®

Distribution & Logistics: Süd-Metall Beschläge GmbH

Sägewerkstrasse 5 | 83404 Ainring / Hammerau | T +49 (0) 8654 4675-50 | F +49 (0) 8654 3672

Email: info@suedmetall.com | www.suedmetall.com

Development & Production: Süd-Metall Schließsysteme Leipzig GmbH

Apelsteinallee 1 | 04416 Markkleeberg | www.suedmetall-schliesssysteme.com

Find us on     

All information is subject to colour deviations and printing errors due to printing technology.

The general terms of delivery and payment per to our website apply. The general terms and conditions of Süd-Metall Beschläge GmbH apply.

Please note the warranty statements on our website.

We, SÜD-METALL BESCHLÄGE GMBH, Sägewerkstraße 5, D - 83404 Ainring /Hammerau, are the responsible party in terms of data protection law.

If you are not yet our customer or have voluntarily provided us with your data for the purpose of contacting us, your data originates from our own research via freely accessible resources such as yellow pages, networking platforms, trade registers and similar. The processing of your data for the purpose of marketing is carried out without your consent in accordance with Art. 6 Para. 1 (1) lit f) of the GDPR for information in line with your interests. In any case you can object to us processing for marketing purposes for the future at any time. For more information on your other rights, e.g. to information, correction, deletion, your rights of appeal and the data protection officer, please refer to our data protection declaration, available at <https://www.suedmetall.com/4/datenschutz/> and our data protection information sheet, available at https://www.suedmetall.com/fleadmin/user_upload/downloads/Information_Datenschutz_D-EN.pdf.



Art.-Nr. 36.06.7605