



EXCESS EASY 3

PRODUCT OVERVIEW

Südmetail presents the
new door handle series
excess easy 3

Südmetail®

EXCESS EASY 3

Excess easy 3 is the latest mounting system from Südmetall.

The modern door handle revolutionizes the traditional door opening concept with a fully integrated locking mechanism. This ingenious design makes the traditional key rosette superfluous and ensures a clear door aesthetic.

The mechanism inside the handle allows WC doors to be locked effortlessly by simply operating an intuitively placed slider. A discreet emergency release function offers additional security without detracting from the minimalist look or attracting attention.

The unlockable version of the door handle has no locking function. For additional security, there is also a lockable version that can be opened with a key.

Here too, the slider is positioned almost invisibly on the inside, while the door can be opened from the outside with the key.

DESIGN

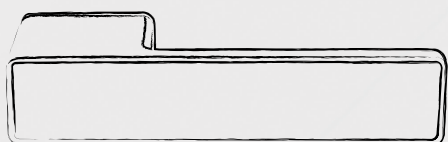
The door handle is universally designed and compatible with any standard mortise lock, making it an ideal solution. Its minimalist design blends seamlessly into any modern or traditional environment, emphasizing the purity of the lines without compromising functionality.

Südmetall's new excess easy 3 door handle combines modern design with security. A real eye-catcher that unites style and protection.



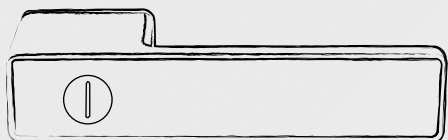
PRODUCT ADVANTAGES

The versatile design of the door handle allows it to be used on both DIN right and DIN left doors, and thanks to the lifting spring on both sides, it always works reliably.



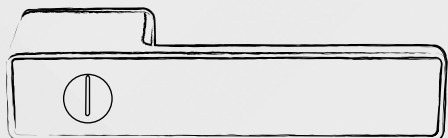
UNLOCKABLE

No sliding bolt



LOCKABLE WC

With an „invisible“ sliding bolt on the inside and a discreet emergency release on the outside



LOCKABLE WITH KEY

With an „invisible“ sliding bolt on the inside and a locking cylinder on the outside (keyed alike)



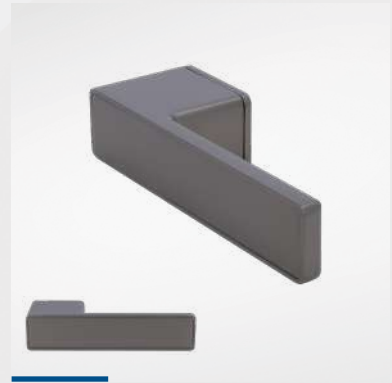
The sliding bolt is located on the inside of the door handle for the variants „Lockable WC“ and „Lockable with key“

VOLUMINA KARREE-R



VOLUMINA KARREE-R

Black satin finish



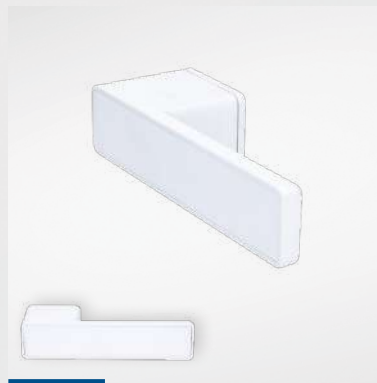
VOLUMINA KARREE-R

Gray satin finish



VOLUMINA KARREE-R

Gold satin finish



VOLUMINA KARREE-R

White satin finish



VOLUMINA KARREE-R

Stainless steel satin finish

VOLUMINA ROTONDA-R



VOLUMINA ROTONDA-R

Black satin finish



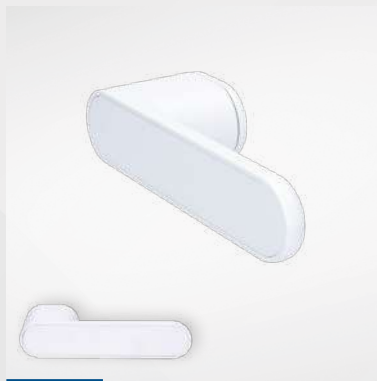
VOLUMINA ROTONDA-R

Gray satin finish



VOLUMINA ROTONDA-R

Gold satin finish



VOLUMINA ROTONDA-R

White satin finish



VOLUMINA ROTONDA-R

Stainless steel satin finish

BILLY



Article no.	Description	Color	Characteristics	PU
27.11.0010	Volumina Karree-R unlockable	Black satin finish	Lifting spring, TS 38-50 mm, spindle 8 mm + sleeve 8.5 mm	GRT
27.11.0020	Volumina Karree-R lockable WC	Black satin finish	Lifting spring, TS 38-50 mm, spindle 8 mm + sleeve 8.5 mm	GRT
27.11.0030	Volumina Karree-R lockable with key	Black satin finish	Lifting spring, TS 38-50 mm, spindle 8 mm + sleeve 8.5 mm	GRT
27.11.0100	Volumina Karree-R unlockable	Stainless steel satin finish	Lifting spring, TS 38-50 mm, spindle 8 mm + sleeve 8.5 mm	GRT
27.11.0110	Volumina Karree-R lockable WC	Stainless steel satin finish	Lifting spring, TS 38-50 mm, spindle 8 mm + sleeve 8.5 mm	GRT
27.11.0120	Volumina Karree-R lockable with key	Stainless steel satin finish	Lifting spring, TS 38-50 mm, spindle 8 mm + sleeve 8.5 mm	GRT
27.11.0200	Volumina Karree-R unlockable	White satin finish	Lifting spring, TS 38-50 mm, spindle 8 mm + sleeve 8.5 mm	GRT
27.11.0210	Volumina Karree-R lockable WC	White satin finish	Lifting spring, TS 38-50 mm, spindle 8 mm + sleeve 8.5 mm	GRT
27.11.0220	Volumina Karree-R lockable with key	White satin finish	Lifting spring, TS 38-50 mm, spindle 8 mm + sleeve 8.5 mm	GRT
27.11.0300	Volumina Karree-R unlockable	Gray satin finish	Lifting spring, TS 38-50 mm, spindle 8 mm + sleeve 8.5 mm	GRT
27.11.0310	Volumina Karree-R lockable WC	Gray satin finish	Lifting spring, TS 38-50 mm, spindle 8 mm + sleeve 8.5 mm	GRT
27.11.0320	Volumina Karree-R lockable with key	Gray satin finish	Lifting spring, TS 38-50 mm, spindle 8 mm + sleeve 8.5 mm	GRT
27.11.0800	Volumina Karree-R unlockable	Gold satin finish	Lifting spring, TS 38-50 mm, spindle 8 mm + sleeve 8.5 mm	GRT
27.11.0810	Volumina Karree-R lockable WC	Gold satin finish	Lifting spring, TS 38-50 mm, spindle 8 mm + sleeve 8.5 mm	GRT
27.11.0820	Volumina Karree-R lockable with key	Gold satin finish	Lifting spring, TS 38-50 mm, spindle 8 mm + sleeve 8.5 mm	GRT

Article no.	Description	Color	Characteristics	PU
27.11.0400	Volumina Rotonda-R unlockable	Black satin finish	Lifting spring, TS 38-50 mm, spindle 8 mm + sleeve 8.5 mm	Set
27.11.0410	Volumina Rotonda-R lockable WC	Black satin finish	Lifting spring, TS 38-50 mm, spindle 8 mm + sleeve 8.5 mm	Set
27.11.0420	Volumina Rotonda-R lockable with key	Black satin finish	Lifting spring, TS 38-50 mm, spindle 8 mm + sleeve 8.5 mm	Set
27.11.0500	Volumina Rotonda-R unlockable	Stainless steel satin finish	Lifting spring, TS 38-50 mm, spindle 8 mm + sleeve 8.5 mm	Set
27.11.0510	Volumina Rotonda-R lockable WC	Stainless steel satin finish	Lifting spring, TS 38-50 mm, spindle 8 mm + sleeve 8.5 mm	Set
27.11.0520	Volumina Rotonda-R lockable with key	Stainless steel satin finish	Lifting spring, TS 38-50 mm, spindle 8 mm + sleeve 8.5 mm	Set
27.11.0600	Volumina Rotonda-R unlockable	White satin finish	Lifting spring, TS 38-50 mm, spindle 8 mm + sleeve 8.5 mm	Set
27.11.0610	Volumina Rotonda-R lockable WC	White satin finish	Lifting spring, TS 38-50 mm, spindle 8 mm + sleeve 8.5 mm	Set
27.11.0620	Volumina Rotonda-R lockable with key	White satin finish	Lifting spring, TS 38-50 mm, spindle 8 mm + sleeve 8.5 mm	Set
27.11.0700	Volumina Rotonda-R unlockable	Gray satin finish	Lifting spring, TS 38-50 mm, spindle 8 mm + sleeve 8.5 mm	Set
27.11.0710	Volumina Rotonda-R lockable WC	Gray satin finish	Lifting spring, TS 38-50 mm, spindle 8 mm + sleeve 8.5 mm	Set
27.11.0720	Volumina Rotonda-R lockable with key	Gray satin finish	Lifting spring, TS 38-50 mm, spindle 8 mm + sleeve 8.5 mm	Set
27.11.0900	Volumina Rotonda-R unlockable	Gold satin finish	Lifting spring, TS 38-50 mm, spindle 8 mm + sleeve 8.5 mm	Set
27.11.0910	Volumina Rotonda-R lockable WC	Gold satin finish	Lifting spring, TS 38-50 mm, spindle 8 mm + sleeve 8.5 mm	Set
27.11.0920	Volumina Rotonda-R lockable with key	Gold satin finish	Lifting spring, TS 38-50 mm, spindle 8 mm + sleeve 8.5 mm	Set

Article no.	Description	Color	Characteristics	PU
27.11.1000	Billy-R unlockable with screw rosette	Stainless steel satin	Lifting spring, TS 38-45 mm, spindle 8 mm + sleeve 8.5 mm	Set
27.11.1010	Billy-R lockable WC with screw rosette	Stainless steel satin	Lifting spring, TS 38-45 mm, spindle 8 mm + sleeve 8.5 mm	Set
27.11.1020*	Billy-R lockable with key with screw rosette	Stainless steel satin	Lifting spring, TS 38-45 mm, spindle 8 mm + sleeve 8.5 mm	Set
27.11.1100*	Billy-R unlockable with screw rosette	Black satin finish	Lifting spring, TS 38-45 mm, spindle 8 mm + sleeve 8.5 mm	Set
27.11.1110*	Billy-R lockable WC with screw rosette	Black satin finish	Lifting spring, TS 38-45 mm, spindle 8 mm + sleeve 8.5 mm	Set
27.11.1120*	Billy-R lockable with key with screw rosette	Black satin finish	Lifting spring, TS 38-45 mm, spindle 8 mm + sleeve 8.5 mm	Set

* available from June 2024

Südmetall®

Süd-Metall Beschläge GmbH

D-83404 Ainring/Hammerau | Sägewerkstrasse 5 | T +49 (0) 86 54 / 46 75 50 | F +49 (0) 86 54 / 46 75 70

eMail: info@suedmetall.com | www.suedmetall.com

Find us on     

We, SÜD-METALL BESCHLÄGE GMBH, Sägewerkstraße 5, D - 83404 Ainring / Hammerau, are responsible within the meaning of data protection law. If you are not yet our customer or have voluntarily provided us with your data for the purpose of contacting us, your data originates from our own research via freely accessible resources such as yellow pages, network platforms, trade registers and similar. Your data will be processed for the purpose of marketing without consent in accordance with Art. 6 para. 1 sentence 1 lit. f) GDPR for information in line with your interests. In any case, you can object to future processing for marketing purposes at any time. For more information on your other rights, e.g. to information, correction, deletion, your rights of appeal and to the data protection officer, please refer to our privacy policy, available at <https://www.suedmetall.com/4/datenschutz/> and our information sheet on data protection, available at https://www.suedmetall.com/fileadmin/user_upload/downloads/Information_Datenschutz_D-EN.pdf.