

Südmetall®



ÜMANAGEMENT 2.0 SYSTEM PLATFORM

ÜMANAGEMENT 2.0



ÜMANAGEMENT 2.0

Access control systems have become an indispensable part of the security infrastructure in the modern world. They are used to restrict and monitor access to buildings, rooms or specific areas. Implementing an effective access control system requires not only physical barriers such as locks and doors, but also a reliable software solution to efficiently manage and monitor access. ÜManagement 2.0 software is at the heart of an effective access control system. It provides the tools to manage, monitor and customize the system. ÜManagement 2.0 offers property managers a high level of convenience and is therefore variably recommended for the smallest properties but also for large buildings with a large number of users.

FUNCTIONS OF ACCESS CONTROL SYSTEMS

- ✓ **Manage access authorizations**
Access control systems allow administrators to define individual access authorizations for employees, visitors and other users. These permissions can be restricted or extended based on roles, schedules and other criteria.
- ✓ **Monitoring and logging**
Modern access control systems record all access attempts and generate detailed logs. This helps to track activities, identify unauthorized access attempts and review records in the event of security incidents.
- ✓ **Opening with RFID medium or smartphone**
In addition to the tried and tested RFID cards or transponders, some systems can also be opened using a smartphone.
- ✓ **Flexibility and scalability**
From small offices to large industrial facilities, access control systems offer flexibility and scalability. New users can be easily added or removed, and the system can be expanded as required.



ÜMANAGEMENT

ÜMANAGEMENT 2.0 SOFTWARE

✓ **User administration**

ÜManagement 2.0 makes it easy to manage users, access rights and groups. Administrators can create individual profiles and define authorizations based on specific requirements.

✓ **Time-controlled access control**

ÜManagement 2.0 can restrict access at certain times and allows you to set schedules for access authorizations, e.g. for regular working hours or outside office hours.

✓ **Guest cards**

The software has a special guest card function designed for hotel operations. Reception staff can easily create guest cards via a specially designed, simplified user interface. This user interface does not grant access to other functions in order to avoid unintentional adjustments to the system configuration.

✓ **Logging and reporting**

A comprehensive logging function records all activities related to the access control system. Reports can be generated to provide insight into past events and trends.

✓ **Integration and ease of use**

ÜManagement 2.0 offers the possibility to connect to other security and building management systems.

✓ **Access on card**

The necessary data is conveniently transferred to the Mifare cards via a card reader on the PC

FOR THE USER

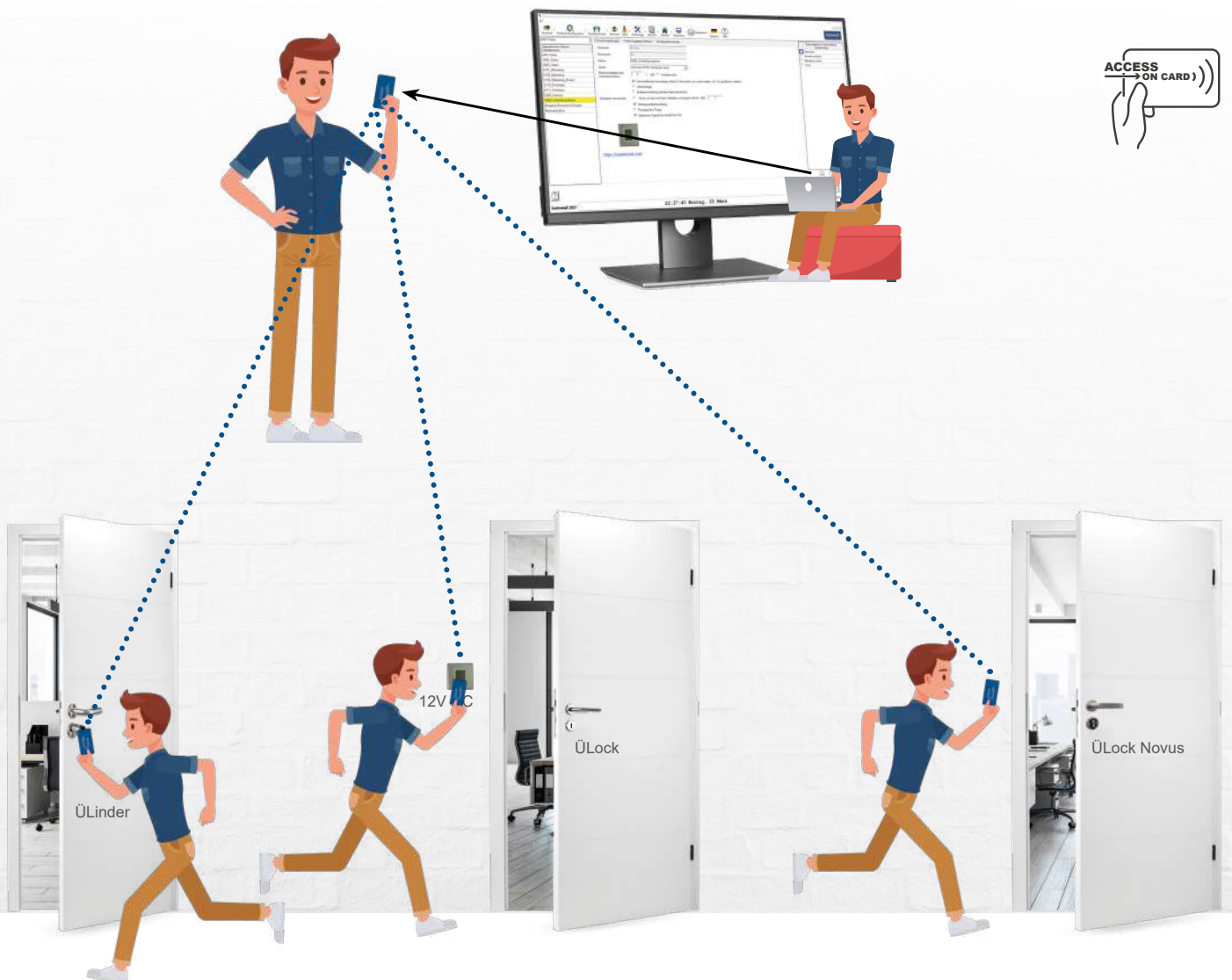
- Only one transponder required, no need for a complete set of keys
- Low risk if the transponder is lost

FOR THE OPERATOR

- Greater convenience and security (e.g. through individual rights / automatic locking of the entrance door, for example)
- No license fees
- Optimized for retrofitting

FOR THE BUILDING TECHNICIAN

- Clear software
- Flexible functions
- Automatic assignment of additional authorizations (e.g. entrance door, meeting room) possible





FLEXIBLE INSTALLATION

- **Standard**
Usual simple installation on the computer / single-user version
- **SQL server installation**
Operation via multiple workstations possible

MANAGEMENT OR PROFESSIONAL OPERATING MODE

- **Management mode**
 - Authorizations are always assigned to a user group
 - Clear handling / organization
 - Ideal for smaller objects
- **Professional mode**
 - Individual doors (e.g. hotel rooms, apartments) can be assigned directly (without a door group)
 - Very extensive organization options

UNIFORM MANAGEMENT OF DIFFERENT LOCKS POSSIBLE

- ÜLock
- ÜLock Novus
- ÜLinder
- ÜHandle

INDUSTRY / OFFICES

- Flexible access for employees

RETIREMENT HOME

- Mrs. Huber is granted access rights
 - to her apartment
 - to the entrance doors
 - to the wellness area during opening hours

HOTEL / APARTMENTS

- Very simple issuing of guest cards
- Points system e.g. for the use of wellness, fitness,...

CLUB / CLUBHOUSE

- Very simple administration possible, hardly any prior knowledge required
- Flexible organization (e.g. time zones, authorization of new club members...)

ÜLOCK AND ÜMANAGEMENT 2.0: THE CONCEPT

In a world where security is paramount, ÜLock and ÜManagement 2.0 represent an innovative concept that ensures security on both sides of a door. This system protects human life through the panic function in the direction of escape and at the same time secures material assets through access control against the direction of escape.

SECURITY ON BOTH SIDES OF THE DOOR

✓ Panic function for escape directions

In an emergency, the safety of human life is paramount. The system guarantees a panic function in the direction of escape to guide people out of a room quickly and safely in dangerous situations.

✓ Protection of material assets

In addition to the protection of life, the protection of property is also of great importance. This includes both mechanical burglary protection and protection against manipulation of the access control function. The diagram on the right illustrates various systems for different security requirements.

✓ Self-locking

The door is always locked, which ensures continuous security. This minimizes potential security gaps and increases protection against unauthorized access.

✓ No attack surface from the outside

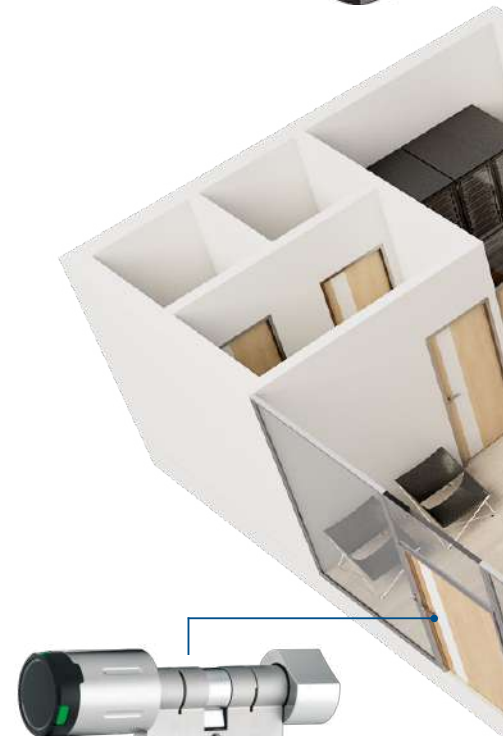
All the electronics are integrated in the lock case of the ÜLocks, which provides no external attack surface and increases the security of the system.

✓ Encrypted data transmission

The system relies on encrypted data transmission between the lock or electronic cylinder and the RFID reader as well as between the RFID card and the reader. This prevents cards from being copied and increases the security of communication.



ÜLOCK NOVUS



ÜLINDER

COMFORT & DESIGN

✓ Individual design

The requirements of the property can be met by the free choice of door fittings. Additional door fittings are not required, which preserves the aesthetic design of the property.

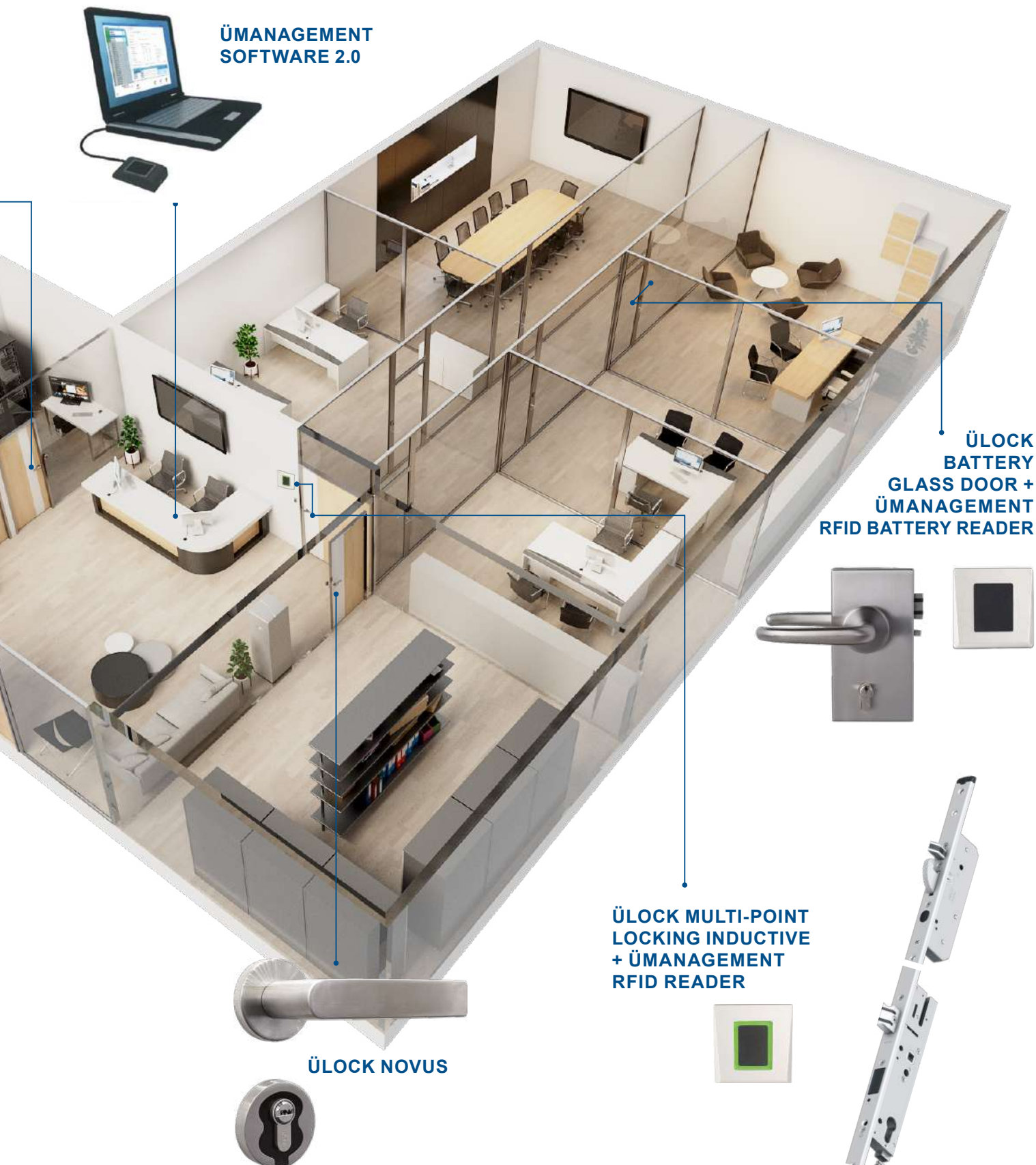
✓ Convenient access

The system offers maximum convenience. The valid RFID card is held in front of the reader and the door can be opened easily by pressing the door handle or turning the cylinder.

THE CONCEPT



The ÜLock and Ümanagement 2.0 concept is not only an innovative solution for security requirements, but also a combination of convenience, design and efficiency. It fits seamlessly into a wide variety of environments and opens up new perspectives for the security industry.



ÜMANAGEMENT 2.0



IDEAL FOR RETROFITTING

✓ No network cabling required

The system does not require any complex network cabling between doors and computers. Data is transmitted efficiently via the card.

✓ Fire doors

The solution can be used in fire doors without compromising safety.

✓ Simple installation

The simplicity of the installation is remarkable. No wiring of the door is necessary.

✓ Energy options

ÜLock Battery, ÜLinder and ÜHandle are battery operated, while ÜLock-B Inductive has an inductive energy transfer that does not require a battery change.

EFFICIENCY, COST TRANSPARENCY & PLANNING SECURITY

✓ Increased efficiency and scalability

Automation of processes and workflows and adaptability to changing business requirements.

✓ Cost transparency

No extra costs for software updates, no recurring license or subscription fees, focus on cost-efficient use of the software.

✓ Planning security

Predictable costs and resource allocation for software projects and effective budgeting.





AREAS OF APPLICATION

Access control systems are used in a wide range of applications, from private companies to public institutions.

✓ Corporate environments

Access control systems are used in companies to regulate access to sensitive offices, server rooms or research facilities. In this way, unauthorized persons can be prevented from accessing confidential information.

✓ Healthcare

Hospitals and medical facilities, as well as retirement homes and nursing homes, use access control systems to restrict access to areas containing sensitive patient data or medication. This helps to ensure compliance with data protection guidelines and patient safety.

✓ Educational institutions

Schools, universities and other educational institutions use access control systems to control and monitor access to classrooms, laboratories or other specific areas.

✓ Government and administrative buildings

Access control systems are critical in government buildings and administrative facilities to protect access to sensitive data and facilities.

✓ Commercial and residential buildings

In apartment buildings, residential complexes and commercial properties, access control systems can provide secure and convenient access for residents and tenants.

✓ Industrial facilities

In industrial environments, access control systems are used to restrict access to hazardous or sensitive areas. This contributes to occupational safety and the protection of employees.

✓ Transportation

In airports, train stations and public transportation, access control systems are used to ensure passenger safety and regulate access to safety-critical areas.

✓ Leisure facilities

Gyms, swimming pools and other leisure facilities use access control systems to restrict access to paying customers and prevent abuse.

✓ Hotels

In hotels, access control systems enable secure and efficient management of room access for guests and employees.

✓ Retail stores

Stores can use access control systems to restrict access to storage areas or rooms.

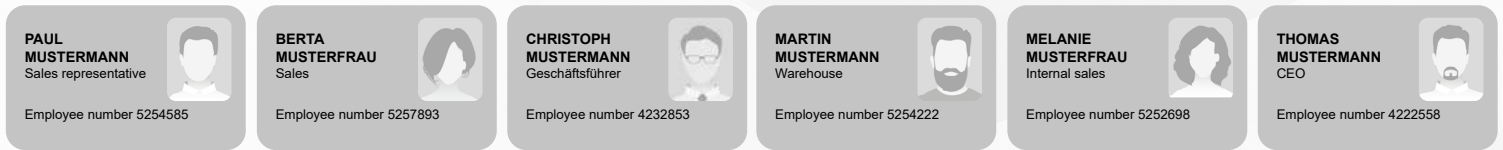


MANAGEMENT OPERATING MODE

TIME ZONE 1

TIME ZONE 2

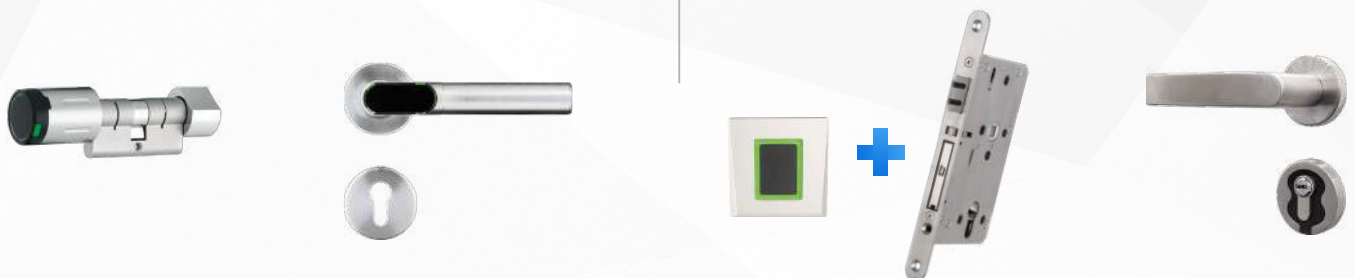
TIME ZONE N



DOOR GROUP 1

DOOR GROUP 2

DOOR GROUP 256





MANAGEMENT OPERATING MODE

✓ Target group

Properties of all sizes e.g.

- Office buildings
- Clubhouses
- Churches
- Schools / hospitals

✓ Organization of authorizations

- Everyone who needs access receives an RFID transponder (either a card or a key fob), which is configured according to their authorizations.
- Users are assigned to one or more door groups. This gives the user access rights to all doors assigned to the respective door groups.

✓ Door groups

- The door groups enable a clear organization of access control.
- For small properties, the software can automatically create a door group with the same name for each door.
- The larger the property, the more it makes sense to group the doors into door groups (e.g. entrance doors, meeting rooms, floors, departments...).
- The user is then assigned a door group (e.g. entrance doors) and automatically receives authorization for all assigned doors.

✓ Time zones

- A time zone can be assigned to each user.
- A time zone can be used to restrict access rights to the business hours of the property, for example.
- Two times can be selected for each time zone, e.g. Monday to Friday from 08:00 - 18:00, Saturday + Sunday from 09:00 - 13:00.



PROFESSIONAL OPERATING MODE

TIME ZONE 1

TIME ZONE 2

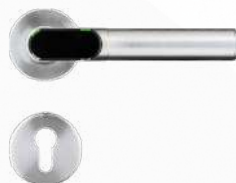
TIME ZONE N



PAUL MUSTERMANN Assistant doctor Employee number 5254585	BERTA MUSTERFRAU Cleaning taff Employee number 5257893	CHRISTOPH MUSTERMANN Doctor Employee number 4232853	MARTIN MUSTERMANN Therapeut Employee number 5254222	MELANIE MUSTERFRAU Nurse Employee number 5252698	THOMAS MUSTERMANN Volunteer Employee number 4222558
---	---	--	--	---	--

DOOR GROUP 2

DOOR GROUP 256





PROFESSIONAL OPERATING MODE

✓ Target group

Properties of any size in which authorizations for individual doors are to be assigned, e.g.

- Hotels
- Apartments
- Senior residences

✓ Organization of authorizations

- Everyone who requires access receives an RFID transponder (either a card or a key fob), which is configured according to their authorizations.
- Users are assigned directly to one or more (max. 5) rooms / apartments.
- It is also possible to assign door groups (general doors).

✓ Door groups

- The door groups enable clear organization of access control.
- The „Professional“ operating mode enables automatic assignment of door groups in addition to the room door. For example, the entrance doors, lounges, wellness areas, etc. can be automatically assigned to a specific hotel room.
- The user is then assigned a door group (e.g. entrance doors) in addition to the room door and automatically receives authorization for all assigned doors.

✓ Time zones

- A time zone can be assigned to each user.
- A time zone can be used to restrict access rights to the business hours of the property, for example.
- Two times can be selected for each time zone, e.g. Monday to Friday from 08:00 - 18:00, Saturday + Sunday from 09:00 - 13:00.

✓ Guest cards for hotel operations

- With the help of a separate, simplified user interface, guest cards can be issued directly at reception.
- No access to other functions is possible from this user interface in order to prevent accidental changes to the configuration.
- Access rights are limited to the booked period.
- The hotel guest automatically receives authorizations for the doors assigned to their hotel room (e.g. entrance doors).



PERFORMANCE FEATURES

GENERAL PERFORMANCE FEATURES

✓ Uniform management of different locks possible

- ÜLock + RFID wall reader
- ÜLock Novus
- ÜLock multi-point lock + RFID wall reader
- Electronic cylinder ÜLinder
- Electronic door handle ÜHandle

✓ Intuitive operation, very clear user interface

✓ Doors

- Unlimited number
- Timer function
- Targeted locking at a specified time

✓ User

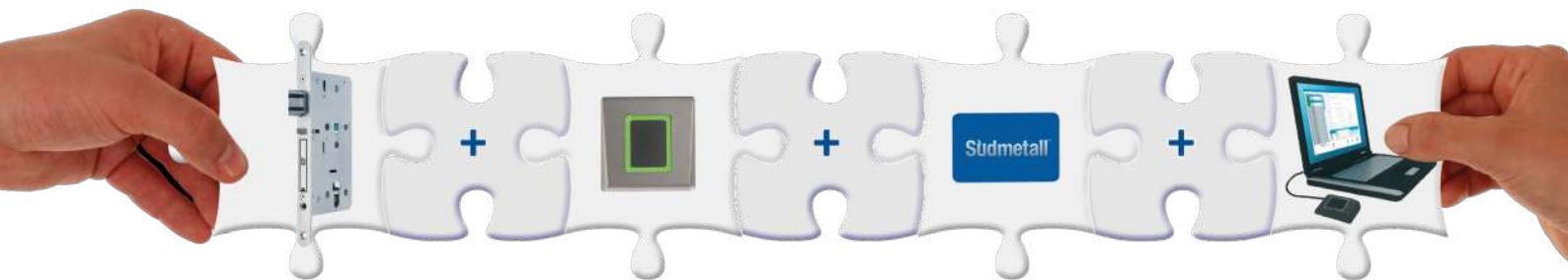
- Unlimited number
- Multiple authorizations per user possible
- Search function (if a medium can no longer be assigned)
- Special guest cards can be created for hotel and apartment operations

The screenshot displays the Südmetall software interface for user management. The top navigation bar includes icons for Standorte, Hardwarekonfiguration, Zutrittskontrolle, Benutzer, Gäste, Werkzeuge, Berichte, Standort, Repository, Datenbank, Deutsch, and Hilfe. The main content area is titled 'Benutzerdetails: Karten' and shows a table of cards. The selected card has the number 04322B4A101290, description 'Neu', and validity until 08.02.2025. Below the table, there are fields for 'Kartennummer (Hex)', 'Beschreibung', 'Gültig von', 'Gültig bis', and 'Zeitzone'. There are also checkboxes for 'Karte 3 Sekunden vor Leser halten, um Tür geöffnet zu halten' and 'Auf schwarzer Liste'. A 'Wandleser' section contains checkboxes for 'Universalschlüsselfunktion', 'Türen ignorieren zeitliche Beschränkung auf Karte', and 'Die Zimmer ignorieren zeitliche Einschränkungen auf der Karte'. A 'Guthaben' section has checkboxes for 'Unbegrenzt Guthaben' and 'Guthaben verwalten'. On the right, there are sections for 'öffentliche Türen-Gruppen' and 'Art des Zutritts' with checkboxes for 'Erlaubt' and 'Verweigert'. At the bottom, there are buttons for 'Neue Karte hinzufügen', 'Karte füllen mit gespeicherter Vorlage', 'Als neue Vorlage speichern', 'Karte erstellen', 'Ersatzkarte', 'Löschen', and 'Drucken'.

✓ Time zones

- Two validities per time zone (e.g. other times at the weekend)

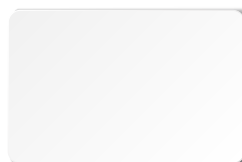
The screenshot shows the 'Time zones' configuration in the Südmetall software. It features a dropdown menu for 'Time zone' with 'Mitarbeiter' selected. Below, there are two sections for 'Validity hours'. The first section, 'Validity hours 1', shows a time range from 07:00 to 18:00 with checkboxes for Monday through Friday, and options for Saturday, Sunday, and Holiday. The second section, 'Validity hours 2', shows a time range from 08:30 to 12:30 with checkboxes for Monday through Friday, and options for Saturday, Sunday, and Holiday.



CARDS

✓ Compatible standard cards

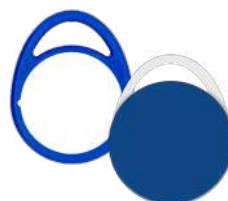
- Programming cards
Mifare Desfire EV1 and EV2
- User cards
Mifare Classic, Mifare Desfire EV1 and EV2



PROGRAMMING CARDS



USER CARD
(individual branding possible)



TRANSPONDER



ADHESIVE

SPECIFICATION

	MANAGEMENT MODE			PROFESSIONAL MODE		
	Wall reader	Door reader	Wall and door readers	Wall reader	Door reader	Wall and door readers
Building				250	250	250
Corridors per building				250	250	250
Corridors				62500	62500	62500
Doors per corridor				255	255	255
Wall reader	256		256	15937500		15937500
Door reader		65024	65024		68835	65535
Door groups per reader	1	1	1	1	1	1
Door groups	255	255	255	255	255	255
Reader per door group	255	65280	65280	255	65280	65280
RFID media	unlimited	16383	16383	unlimited	16383	16383
Door groups per card	255	255	255	255	255	255
Office/app doors per medium				5	16	5 wall / 16 door
Time zones per medium	1	1	1	1	1	1
User	unlimited	16383	16383	unlimited	16383	16383
Cards per user	unlimited	16383	16383	unlimited	16383	16383
Time zones	unlimited	unlimited	unlimited	unlimited	unlimited	unlimited
Times per time zone	2	2	2	2	2	2

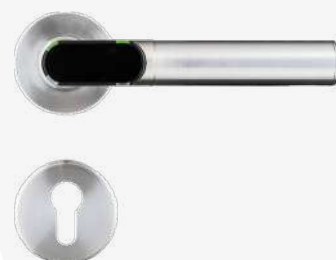
ÜMANAGEMENT 2.0

ÜManagement 2.0 is an **innovative platform** that makes it easier for you **to manage various access devices**. With the **ÜLock + RFID reader**, the **ÜHandle**, the new **Ülock Novus** and the tried-and-tested **ÜLinder**, you have a wide range of options for **individually controlling access** to your properties.

The **ease of use** and **high level of convenience** make **ÜManagement 2.0** an indispensable tool for small and large properties. Regardless of whether you only have a few users or a large number of users - **the platform is versatile** and can be perfectly adapted to your needs.

ÜLOCK

A tried and tested solution is the combination of ÜLock Battery or Inductive with an RFID reader, which is installed in the wall next to the door. This RFID reader is available for operation with 12V DC as well as battery-powered



ÜHANDLE

ÜLOCK + RFID READER



ÜLOCK MF

Multi-point locking systems have several locking points that engage in the door frame at the same time and therefore offer significantly higher security. Convenient access control is possible in combination with an RFID battery reader



ÜLOCK MF + RFID READER

ÜMANAGEMENT 2.0



Thanks to the **individual configuration**, you can **tailor the system precisely to your requirements** and thus ensure **maximum security**. ÜManagement 2.0 therefore not only offers you **efficient management** of your access devices, but also a **high degree of flexibility and convenience**. It is precisely these functions that make ÜManagement 2.0 unique.

ÜHANDLE

It can be fitted to almost any door with moderate security requirements. The electronics and batteries are located in the door handle

electr. door handle

ÜLOCK NOVUS

The RFID reader is housed in the PZ rosette, while the entire electronics are integrated in the door lock. This perfectly combines security, convenience and design. Retrofitting to conventional doors is possible without additional adjustments or drilling



ÜLOCK NOVUS

ÜLINDER

The ÜLinder is the perfect addition for door situations where retrofitting electronics is complex. The mechanical cylinder is simply replaced with the ÜLinder



ÜLINDER
electronic cylinder





Art.-Nr. 36.06.9784

Südmetall®

Sales & Logistics: Süd-Metall Beschläge GmbH

Sägewerkstrasse 5 | 83404 Ainring / Hammerau | T +49 (0) 8654 4675-50 | F +49 (0) 8654 4675-70

Email: info@suedmetall.com | www.suedmetall.com

Development & Production: Süd-Metall Schließsysteme Leipzig GmbH

Apelsteinallee 1 | 04416 Markkleeberg | www.suedmetall-schliesssysteme.com

All information provided subject to typographical colour deviations and printing errors.

The terms of payment and delivery on our website apply. The general terms and conditions (AGB) of Süd-Metall Beschläge GmbH apply. Please note the warranty on our website. Art.-No.: 36.06.4765

We, the company SÜD-METALL BESCHLÄGE GMBH, Sägewerkstraße 5, D - 83404 Ainring / Hammerau, are responsible in terms of data protection law. Insofar as you are not yet a customer of ours or if you have not voluntarily provided us with your data to establish contact, your data originate from our own research in resources available through the public domain, e.g. trade directories, network platforms, company registers and the like. Your data are being processed for marketing purposes without your consent according to Section 6 Subsection 1 S. 1 lit f) GDPR to enable us to meet information needs. In all cases you may contact us at any time to object to a future processing of these data for marketing purposes. More information about your other rights, for example regarding information, corrections, deletions, your right to complain and information concerning our data protection official is contained in our data protection declaration which you can access at <https://www.suedmetall.com/4/datenschutz/> and in our information sheet which you can access at https://www.suedmetall.com/fileadmin/user_upload/downloads/Information_Datenschutz_D-EN.pdf.