



EXXESS EASY 3

PRODUCT OVERVIEW

Südmetall presents the
new door handle series
exxess easy 3

Südmetall[®]

EXCESS EASY 3

Excess easy 3 is the latest mounting system from Südmetail.

The modern door handle revolutionizes the traditional door opening concept with a fully integrated locking mechanism. This ingenious design makes the traditional key rosette superfluous and ensures a clear door aesthetic.

The mechanism inside the handle allows WC doors to be locked effortlessly by simply operating an intuitively placed slider. A discreet emergency release function offers additional security without detracting from the minimalist look or attracting attention.

The unlockable version of the door handle has no locking function. For additional security, there is also a lockable version that can be opened with a key.

Here too, the slider is positioned almost invisibly on the inside, while the door can be opened from the outside with the key.

DESIGN

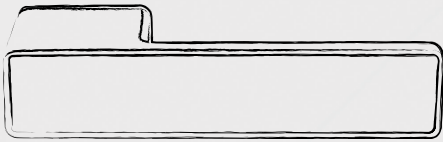
The door handle is universally designed and compatible with any standard mortise lock, making it an ideal solution. Its minimalist design blends seamlessly into any modern or traditional environment, emphasizing the purity of the lines without compromising functionality.

Südmetail's new excess easy 3 door handle combines modern design with security. A real eye-catcher that unites style and protection.



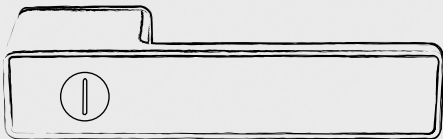
PRODUCT ADVANTAGES

The versatile design of the door handle allows it to be used on both DIN right and DIN left doors, and thanks to the lifting spring on both sides, it always works reliably.



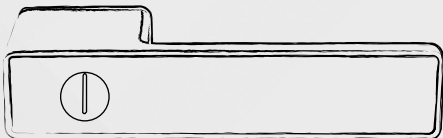
UNLOCKABLE

No sliding bolt



LOCKABLE WC

With an „invisible“ sliding bolt on the inside and a discreet emergency release on the outside



LOCKABLE WITH KEY

With an „invisible“ sliding bolt on the inside and a locking cylinder on the outside (keyed alike)



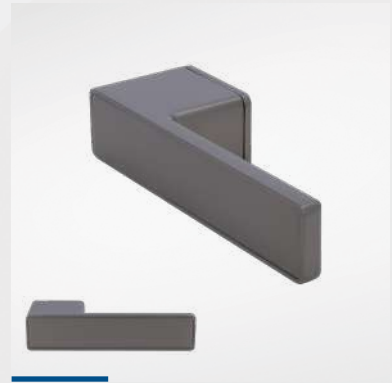
The sliding bolt is located on the inside of the door handle for the variants „Lockable WC“ and „Lockable with key“

VOLUMINA KARREE-R



VOLUMINA KARREE-R

Black satin finish



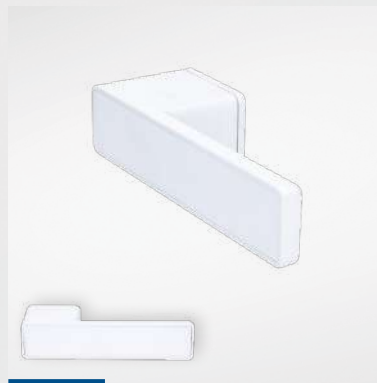
VOLUMINA KARREE-R

Gray satin finish



VOLUMINA KARREE-R

Gold satin finish



VOLUMINA KARREE-R

White satin finish



VOLUMINA KARREE-R

Stainless steel satin finish

VOLUMINA ROTONDA-R



VOLUMINA ROTONDA-R

Black satin finish



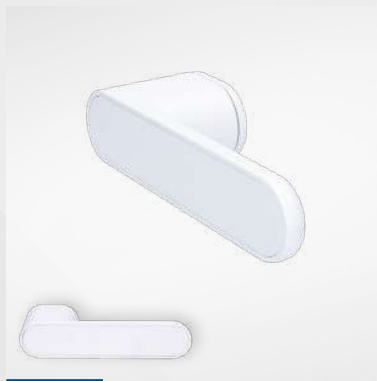
VOLUMINA ROTONDA-R

Gray satin finish



VOLUMINA ROTONDA-R

Gold satin finish



VOLUMINA ROTONDA-R

White satin finish



VOLUMINA ROTONDA-R

Stainless steel satin finish

BILLY-R



Article no.	Description	Color	Characteristics	PU
2711.1000	Billy-R unlockable with screw rosette	Stainless steel satin	Lifting spring, TS 38-45 mm, spindle 8 mm + sleeve 8.5 mm	Set
2711.1010	Billy-R lockable WC with screw rosette	Stainless steel satin	Lifting spring, TS 38-45 mm, spindle 8 mm + sleeve 8.5 mm	Set
2711.1020	Billy-R lockable with key with screw rosette	Stainless steel satin	Lifting spring, TS 38-45 mm, spindle 8 mm + sleeve 8.5 mm	Set
2711.1030	Billy-R lockable WC with screw rosette	Stainless steel satin	Lifting spring, TS 50-57 mm, spindle 8 mm + sleeve 8.5 mm	Set
2711.1040	Billy-R lockable with key with screw rosette	Stainless steel satin	Lifting spring, TS 50-57 mm, spindle 8 mm + sleeve 8.5 mm	Set
2711.1100	Billy-R unlockable with screw rosette	Black satin finish	Lifting spring, TS 38-45 mm, spindle 8 mm + sleeve 8.5 mm	Set
2711.1110	Billy-R lockable WC with screw rosette	Black satin finish	Lifting spring, TS 38-45 mm, spindle 8 mm + sleeve 8.5 mm	Set
2711.1120	Billy-R lockable with key with screw rosette	Black satin finish	Lifting spring, TS 38-45 mm, spindle 8 mm + sleeve 8.5 mm	Set
2711.1130	Billy-R lockable WC with screw rosette	Black satin finish	Lifting spring, TS 50-57 mm, spindle 8 mm + sleeve 8.5 mm	Set
2711.1140	Billy-R lockable with key with screw rosette	Black satin finish	Lifting spring, TS 50-57 mm, spindle 8 mm + sleeve 8.5 mm	Set

Article no.	Description	Norm	Color	Characteristics	PU
60.05.0110	Door hinge 2-part, Ø 15 mm	D-Standard	Black satin finish	For wooden frames with nylon sleeve	Pcs.
60.05.0060	Door hinge 3-part, Ø 15 mm	D-Standard	Black satin finish	For wooden frames with nylon sleeve	Pcs.
60.02.0040	Door hinge 2-part, Ø 15 mm	D-Standard	Stainless steel satin	For wooden frames with nylon sleeve	Pcs.
60.02.0030	Door hinge 3-part, Ø 15 mm	D-Standard	Stainless steel satin	For wooden frames with nylon sleeve	Pcs.
60.05.0200	Door hinge 2-part, Ø 15 mm	D-Standard	White satin finish	For wooden frames with nylon sleeve	Pcs.
60.05.0230	Door hinge 3-part, Ø 15 mm	D-Standard	White satin finish	For wooden frames with nylon sleeve	Pcs.
60.05.0190	Door hinge 2-part, Ø 15 mm	D-Standard	Grey satin finish	For wooden frames with nylon sleeve	Pcs.
60.05.0220	Door hinge 3-part, Ø 15 mm	D-Standard	Grey satin finish	For wooden frames with nylon sleeve	Pcs.
60.05.0240	Door hinge 2-part, Ø 15 mm	D-Standard	Gold satin finish	For wooden frames with nylon sleeve	Pcs.
60.05.0210	Door hinge 3-part, Ø 15 mm	D-Standard	Gold satin finish	For wooden frames with nylon sleeve	Pcs.
32.29.0880	Smooth sleeve, Ø 15 mm	D-Standard	Black satin finish	Height 52 mm	Pcs.
32.29.0930	Smooth sleeve, Ø 15 mm	D-Standard	Brass satin	Height 52 mm	Pcs.
60.06.0110	Door hinge 3-part, Ø 16 mm	Ö-Standard	Black satin finish	For wooden frames with nylon sleeve	Pcs.
32.29.0770	Smooth sleeve, Ø 16 mm	Ö-Standard	Black satin finish	Height 52 mm	Pcs.
32.29.0940	Smooth sleeve, Ø 16 mm	Ö-Standard	Brass satin	Height 52 mm	Pcs.

Article no.	Description	Color	PU
2711.4200	BB rosette Rotonda, Ø 52 mm, 2x hole	Black satin	Pair
2711.4210	BB rosette Rotonda, Ø 52 mm, 2x hole	White satin	Pair
2711.4220	BB rosette Rotonda, Ø 52 mm, 2x hole	Grey satin	Pair
2711.4230	BB rosette Rotonda, Ø 52 mm, 2x hole	Gold satin	Pair
2711.4240	BB rosette Rotonda, Ø 52 mm, 2x hole	SS satin	Pair
2711.4300	PZ rosette Rotonda, Ø 52 mm, 2x hole	Black satin	Pair
2711.4310	PZ rosette Rotonda, Ø 52 mm, 2x hole	White satin	Pair
2711.4320	PZ rosette Rotonda, Ø 52 mm, 2x hole	Grey satin	Pair
2711.4330	PZ rosette Rotonda, Ø 52 mm, 2x hole	Gold satin	Pair
2711.4340	PZ rosette Rotonda, Ø 52 mm, 2x hole	SS satin	Pair

Article no.	Description	Color	PU
2711.4250	BB rosette Karree, 52 x 52 mm, 2x hole	Black satin	Pair
2711.4260	BB rosette Karree, 52 x 52 mm, 2x hole	White satin	Pair
2711.4270	BB rosette Karree, 52 x 52 mm, 2x hole	Grey satin	Pair
2711.4280	BB rosette Karree, 52 x 52 mm, 2x hole	Gold satin	Pair
2711.4350	PZ rosette Karree, 52 x 52 mm, 2x hole	Black satin	Pair
2711.4360	PZ rosette Karree, 52 x 52 mm, 2x hole	White satin	Pair
2711.4370	PZ rosette Karree, 52 x 52 mm, 2x hole	Grey satin	Pair
2711.4380	PZ rosette Karree, 52 x 52 mm, 2x hole	Gold satin	Pair



Südmetall®

Süd-Metall Beschläge GmbH

D-83404 Ainring/Hammerau | Sägewerkstrasse 5 | T +49 (0) 86 54 / 46 75 50 | F +49 (0) 86 54 / 46 75 70
eMail: info@suedmetall.com | www.suedmetall.com

Find us on     

DELIVERY TERMS

Free delivery (free domicile) from € 175.00 net goods value (except long goods or pallet goods).
Package fee € 7.90 (net, without VAT).

For orders below a net goods value of € 75.00, we charge a minimum quantity surcharge of € 7.00 (net, without VAT).
Backorders will continue to be forwarded postage-free.

Freight: For pallet goods and goods over 2250 mm in length (up to approx. 80 kg), a flat-rate freight charge of € 40.00 per bundle/pallet will be applied.

From a net goods value of € 1000.00, delivery is generally FREE OF CHARGE!

(Free-house limit of € 175.00 or € 1000.00 for freight forwarding applies to deliveries within Germany and Austria!)

Except: delivery conditions to other countries! Please inquire about shipping costs!

All information is subject to printing-related color deviations and printing errors.

Prices valid until a new price list is published and only while stocks last.

Our general terms of delivery and payment apply (see our website).

The choice of the appropriate product/fixing for the structural conditions is at the discretion of the respective installer/planner.

Publication date of this brochure: 06.2025

We, SÜD-METALL BESCHLÄGE GMBH, Sägewerkstraße 5, D - 83404 Ainring /Hammerau, are responsible within the meaning of data protection law. If you are not yet our customer or have voluntarily provided us with your data for the purpose of contacting us, your data originates from our own research via freely accessible resources such as yellow pages, network platforms, trade registers and similar. Your data will be processed for the purpose of marketing without consent in accordance with Art. 6 para. 1 sentence 1 lit. f) GDPR for information in line with your interests. In any case, you can object to future processing for marketing purposes at any time. For more information on your other rights, e.g. to information, correction, deletion, your rights of appeal and to the data protection officer, please refer to our privacy policy, available at <https://www.suedmetall.com/4/datenschutz/> and our information sheet on data protection, available at https://www.suedmetall.com/fileadmin/user_upload/downloads/Information_Datenschutz_D-EN.pdf.